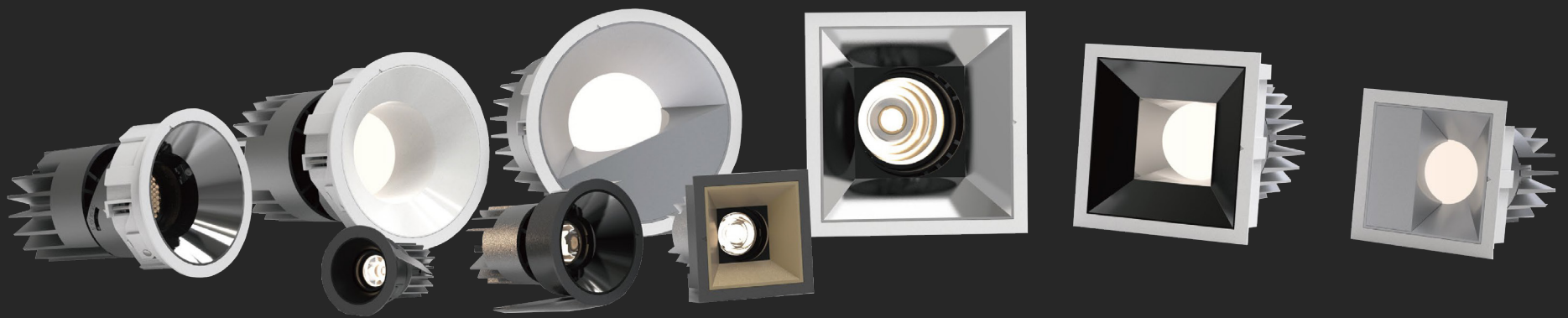


ADL SERIES

A Closer Look At Our Versatile Downlight



Details

- ETL Certified
- 50,000 Hours
- 5 Year Warranty
- Round or Square Options
- Up to 80 Lumens per Watt
- Elegant and Modern Design
- Versatile: Adjustable, Fixed or Wall Wash

Specifications

Input Voltage	100-277V,
Input Frequency	50Hz-60Hz
Lumen Efficacy	Up to 80 lm/w
Light Output (Photopic)	2" 4W- 350 lumens
	3" 7.5W- 600 lumens
	11W- 800 lumens
	4" 13W- 850 lumens
	18W- 1,100 lumens
	25W- 1,700 lumens
	5" 18W- 1,300 lumens
	25W- 1,700 lumens
	6" 25W- 1,800 lumens
	38W- 2,500 lumens
Working Environment	Indoor
Beam Angle	10°, 20°, 40°, 50°
Color Temperature	2700K, 3000K, 4000K, 5000K
CRI	83+, 90+
Power Factor	>0.9
IP Rating	IP44
Life Span	50,000 hrs
Dimming Options	Phase Dimming, 1-10V, DALI
Mounting Options	Recessed



Housing

Universal Input 120-277V standard
New Construction,
Frame-In Kit and Remodel available
TRIAC and 0/1-10V(dimming standard)
Driver easily accessible for replacement
Round and Square option

Trim

Round, Square, Flanged, Flangeless Available
Cut-out: 2", 3", 4", 5", 6"



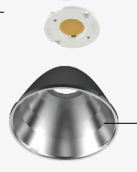
Light source

Powder coated die-cast aluminum heat sink
CCT: 2700K, 3000K, 3500K, 4000K, 5000K
50,000 hours rated life



Optics

Lens and Reflector Available
Beam: 10°, 20°, 30°, 40°, 50°



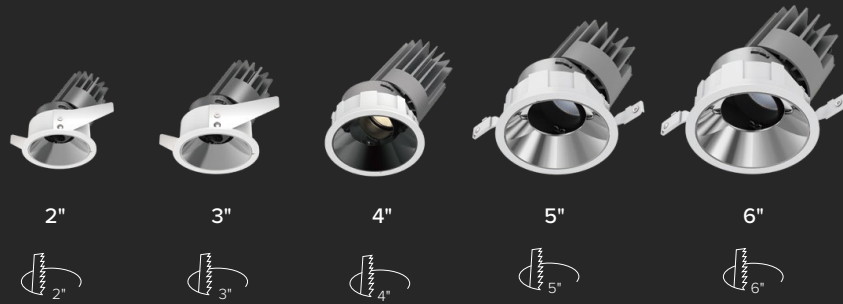
Secondary reflector

Adjustable, Fixed, Wall Washed Available

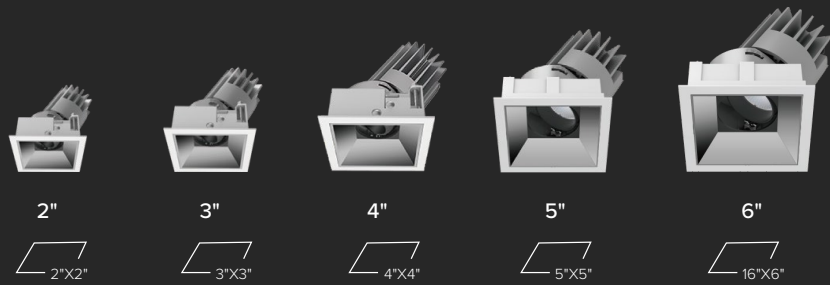


Dimensions

Adjustable

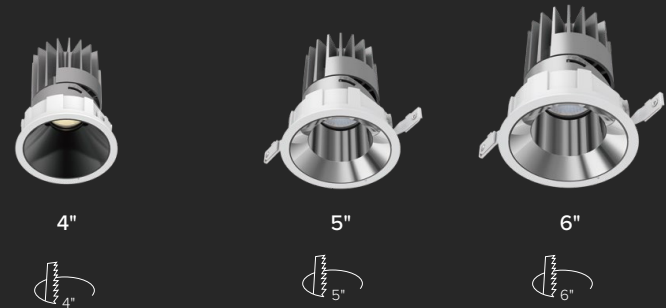


4W 350 lm-380 lm	7.5W 700 lm-750 lm 11W 900 lm-950 lm	18W 1600-1900Lm 25W 2100-2600Lm	18W 1400-1700Lm 25W 1900-2400Lm	25W 1700-2600Lm 38W 2600-3500Lm
------------------	---	------------------------------------	------------------------------------	------------------------------------



4W 350 lm-380 lm	7.5W 700 lm-750 lm 11W 900 lm-950 lm	18W 1600-1900Lm 25W 2100-2600Lm	18W 1400-1700Lm 25W 1900-2400Lm	25W 1700-2600Lm 38W 2600-3500Lm
------------------	---	------------------------------------	------------------------------------	------------------------------------

Fixed

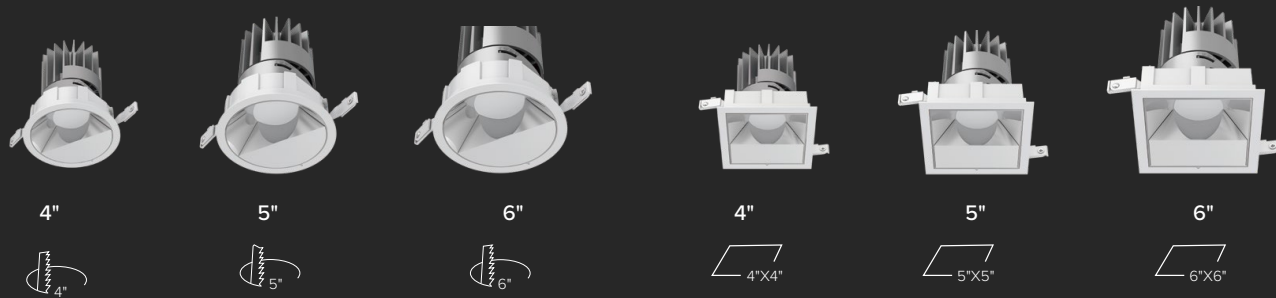


18W 1600-1900Lm 25W 2100-2600Lm	18W 1300-1600Lm 25W 1800-2300Lm	25W 1600-2400Lm 38W 2400-3300Lm
------------------------------------	------------------------------------	------------------------------------



18W 1600-1900Lm 25W 2100-2600Lm	18W 1300-1600Lm 25W 1800-2300Lm	25W 1600-2400Lm 38W 2400-3300Lm
------------------------------------	------------------------------------	------------------------------------

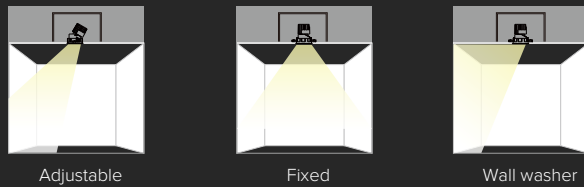
Wall washer



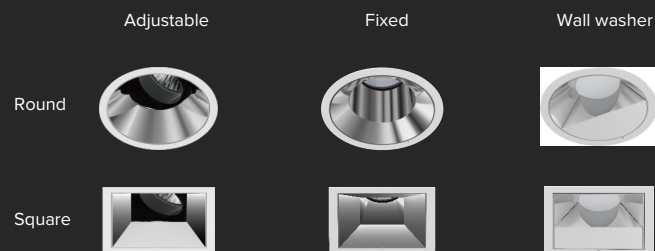
18W 650-750Lm 25W 870-1000Lm	18W 800-900Lm 25W 1100-1300Lm	25W 1000-1100Lm 38W 1400-1600Lm	18W 650-750Lm 25W 870-1000Lm	18W 800-900Lm 25W 1100-1300Lm	25W 1000-1100Lm 38W 1400-1600Lm
---------------------------------	----------------------------------	------------------------------------	---------------------------------	----------------------------------	------------------------------------

Options

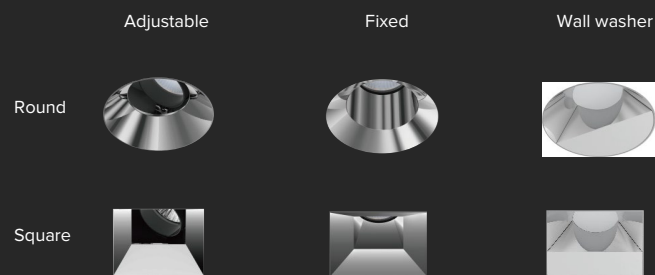
TYPE



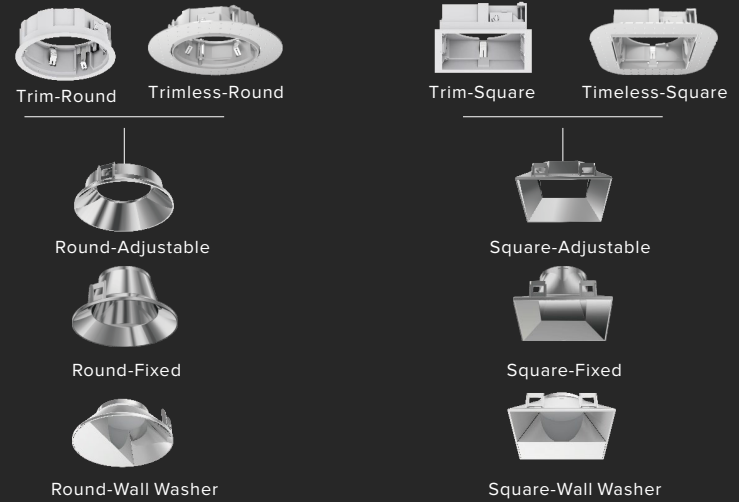
WITH TRIM



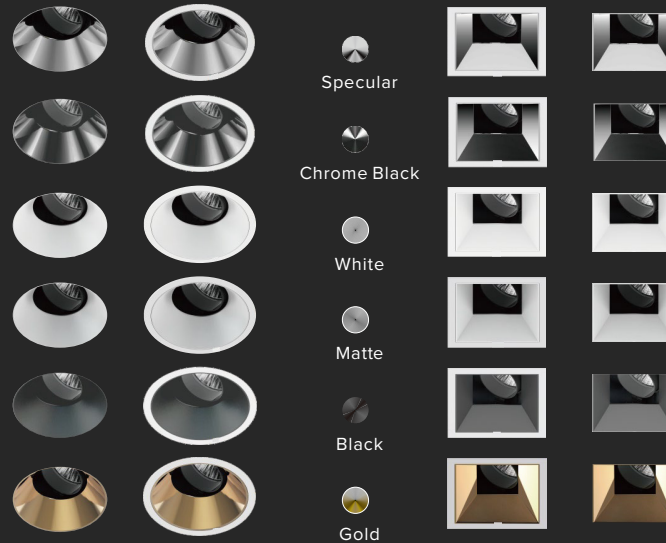
TRIMLESS



SHAPE



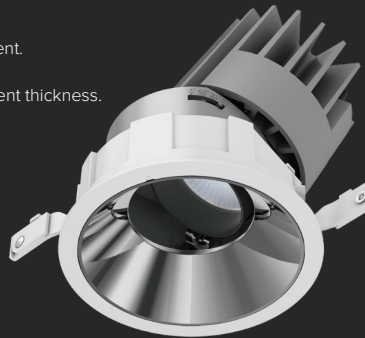
FINISH OPTIONS



Installation

Adjustable

Smart mechanical design features precise angle alignment.
Artistical style meets architectural requirement.
Fixing screws can be rotated to match ceiling with different thickness.



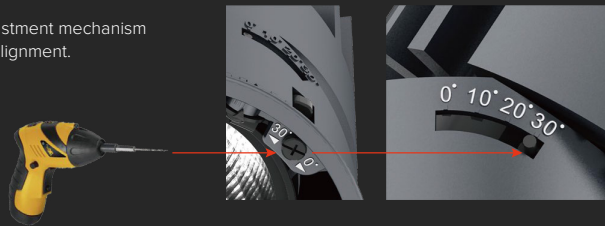
Technology Presents Arts

Ultra-narrow trim design leaves no flange between the secondary reflector and trim, meeting neat ceiling requirement.



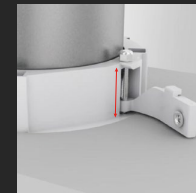
Easy to Adjust

Precision engineered adjustment mechanism achieves accurate angle alignment.

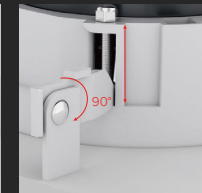


Creative Ceiling Treatment

Installed easily and securely in the ceiling, using two screw fixing mechanisms.
Applying to 1/2"-1" (12-25mm) thickness ceiling and to 1/2"-1/2" (1-12mm) thickness ceiling with a fallen clip.

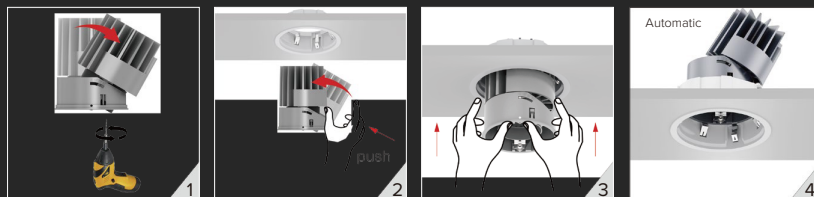


fit for ceiling thickness
1/2"(12mm) to 1" (25mm)



fit for ceiling thickness
1/2"(1mm) to 1/2" (12mm)

Intelligent mechanical design creates easy adjustment and precise alignment.



Installation



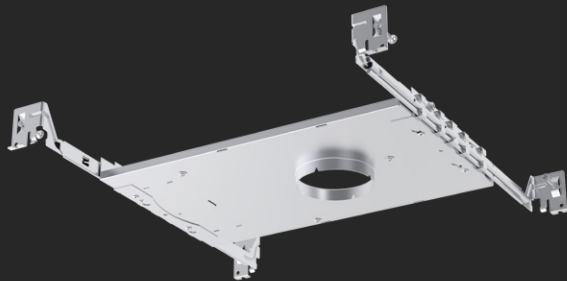
New Construction Housing & Remodel Version



New construction Housing for insulated Ceiling (NCI) IC-Rated

Housing with hanger bar system for new construction installations. Suitable for insulated ceiling or applications.

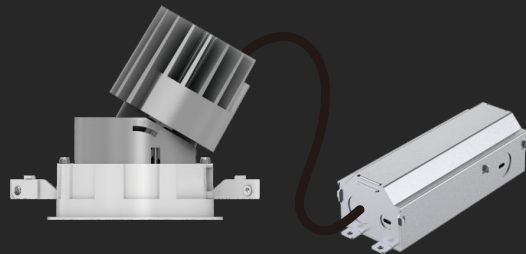
Ceiling thickness: 1/2"



New Construction with Plaster Frame (NCP) Non-IC

Plaster frame with hanger bar system to be installed during rough-in phase. Suitable for non-insulated new construction ceiling assemblies, like Sheetrock, Acoustic Tiles.

Ceiling thickness: 1/2"



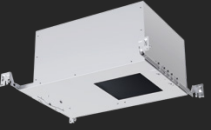
Remodel Driver (RD)

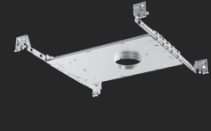
For new or existing ceiling. Suitable for non-insulated ceiling.

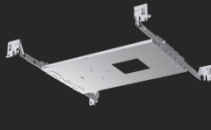
Ceiling thickness: 1/25" to 1"


Available Housings

Round Flanged/Flangeless	Size	Cut-out Dimension	Cut-out Position (A)	Overall Dimension (BXC)	Hanger Bars (D)	Clearance (H)
	2"	Φ2¾"(70mm)	4½"(115mm)	7⅝" x 12 ⅞" (194x307mm)	9½" x 24½" (241x622mm)	7⅞" (195mm)
	4"	Φ4"(100mm)	4½"(115mm)	7⅝" x 12 ⅞" (194x307mm)	9½" x 24½" (241x622mm)	7⅞" (195mm)
	4"	Φ4"(100mm)	4⅝"(126mm)	11 ⅝" x 16 ⅞" (288x420mm)	11 ⅞" x 24½" (299.7x622mm)	7⅞" (195mm)
	5"	Φ5"(130mm)	4⅝"(126mm)	11 ⅝" x 16 ⅞" (288x420mm)	11 ⅞" x 24½" (299.7x622mm)	7⅞" (195mm)
	6"	Φ6"(150mm)	4⅝"(126mm)	11 ⅝" x 16 ⅞" (288x420mm)	11 ⅞" x 24½" (299.7x622mm)	7⅞" (195mm)

Square Flanged	Size	Cut-out Dimension	Cut-out Position (A)	Overall Dimension (BXC)	Hanger Bars (D)	Clearance (H)
	2"	2⅝" x 2⅝" (71mm x 71mm)	4½"(115mm)	7⅝" x 12 ⅞" (194x307mm)	9½" x 24½" (241x622mm)	7⅞" (195mm)
	4"	4" x 4" (100x100mm)	4⅝"(126mm)	7⅝" x 12 ⅞" (194x307mm)	9½" x 24½" (241x622mm)	7⅞" (195mm)
	4"	4" x 4" (100x100mm)	4⅝"(126mm)	11 ⅝" x 16 ⅞" (288x420mm)	11 ⅞" x 24½" (299.7x622mm)	7⅞" (195mm)
	4"	4⅝" x 4⅝" (126x126mm)	4⅝"(126mm)	11 ⅝" x 16 ⅞" (288x420mm)	11 ⅞" x 24½" (299.7x622mm)	7⅞" (195mm)
	6"	6" x 6" (151x151mm)	4⅝"(126mm)	11 ⅝" x 16 ⅞" (288x420mm)	11 ⅞" x 24½" (299.7x622mm)	7⅞" (195mm)

Round Flanged	Size	Cut-out Dimension	Cut-out Position (A)	Overall Dimension (BXC)	Hanger Bars (D)	Clearance (H)
	2"	Φ2¾"(70mm)	4½"(115mm)	7⅝" x 12 ⅞" (194x307mm)	9½" x 24½" (241x622mm)	7⅞" (181mm)
	4"	Φ4"(100mm)	4½"(115mm)	7⅝" x 12 ⅞" (194x307mm)	9 1/2" x 24 1/2" (241x622mm)	5"(127mm)
	4"	Φ4"(100mm)	4⅝"(126mm)	11 ⅝" x 16 ⅞" (288x420mm)	11 ⅞" x 24½" (299.7x622mm)	5"(127mm)
	5"	Φ5"(130mm)	4⅝"(126mm)	11 ⅝" x 16 ⅞" (288x420mm)	11 ⅞" x 24½" (299.7x622mm)	6⅝" (160mm)
	6"	Φ6"(150mm)	4⅝"(126mm)	11 ⅝" x 16 ⅞" (288x420mm)	11 ⅞" x 24½" (299.7x622mm)	6⅞" (190mm)

Square Flanged	Size	Cut-out Dimension	Cut-out Position (A)	Overall Dimension (BXC)	Hanger Bars (D)	Clearance (H)
	2"	2⅝" x 2⅝" (71mm x 71mm)	4½"(115mm)	7⅝" x 12 ⅞" (194x307mm)	9½" x 24½" (241x622mm)	7⅞" (181mm)
	4"	4" x 4" (100x100mm)	4½"(115mm)	7⅝" x 12 ⅞" (194x307mm)	9½" x 24½" (241x622mm)	5"(127mm)
	4"	4" x 4" (100x100mm)	4⅝"(126mm)	11 ⅝" x 16 ⅞" (288x420mm)	11 ⅞" x 24½" (299.7x622mm)	5"(127mm)
	4"	4⅝" x 4⅝" (126x126mm)	4⅝"(126mm)	11 ⅝" x 16 ⅞" (288x420mm)	11 ⅞" x 24½" (299.7x622mm)	6⅝" (160mm)
	6"	6" x 6" (151x151mm)	4⅝"(126mm)	11 ⅝" x 16 ⅞" (288x420mm)	11 ⅞" x 24½" (299.7x622mm)	7⅞" (190mm)

Ceiling thickness	Dimension	Compatible Trim
	L6 ⅞" x W1 ⅞" x H1 ⅞" (L175 x W47 x H41mm)	3", 4"
	L6 ⅞" x W2 ⅞" x H1 ⅞" (L164 x W61 x H50mm)	3", 4"
	L9 ⅞" x W3 ⅞" x H2 ⅞" (L230 x W78 x H54mm)	5", 6"

Downlight, round, square trim, trimless