



PROJECT NAME _____

CATALOG NUMBER _____

NOTES _____

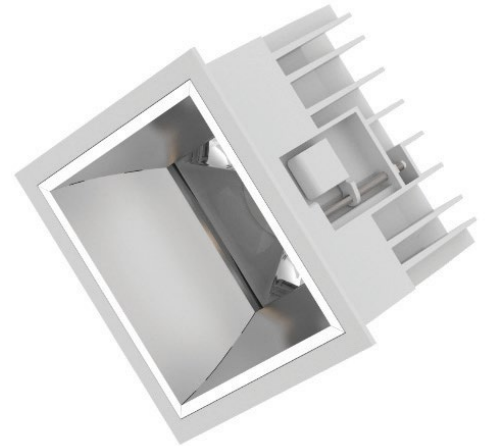
FIXTURE TYPE _____

SQC Series

Commercial Downlight

Highlights

- Elegant Commercial Downlight
- Low Glare Design (UGR<19)
- High Efficiency (Up to 100 lm/w)
- Interchangeable Reflectors
- 5 Year Warranty



Applications

- Lobbies
- Hallways
- Hospitals
- Hospitality

Ordering Guide

Example

LGL-SQC-9-S-SV-30-9-PD

LGL	SQC							
LUMINOS GLOBAL	PRODUCT	POWER	SHAPE	VOLTAGE	CCT	BEAM ANGLE	CRI	DIMMING
LGL	SQC	9=9W	S= (Square)	SV=100-277V	30= (3000K)	N=15°	8=80+	ND= (Non-Dimmable)
		13=13W	R= (Round)		40= (4000K)	M=30°	9=90+	PD= (Phase Dim)
		18=18W			50= (5000K)	L=70°		1= (1-10V)
		25=25W						DA= (DALI)
		38=38W						



PROJECT NAME _____

CATALOG NUMBER _____

NOTES _____

FIXTURE TYPE _____

SQC Series

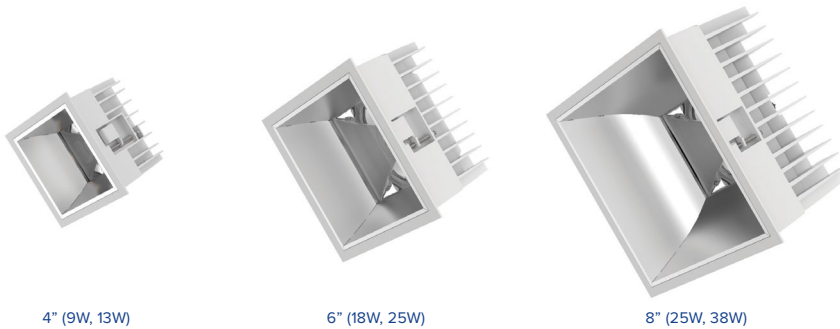
Commercial Downlight

Technical Overview

Performance Summary

Input Voltage	100-277V, 347-480V
Input Frequency	50Hz-60Hz
Lumen Efficacy	Up to 100 lm/w
Light Output	9W- 900 lumens
	13W- 1,300 lumens
	18W- 1,800 lumens
	25W- 2,500 lumens
	38W- 3,800 lumens
Working Environment	Indoor
Beam Angle	15°, 30°, 70°
Color Temperature	3000K, 4000K, 5000K
CRI	80+, 90+
Power Factor	>0.9
IP Rating	IP44
Life Span	50,000 hrs
Dimming Options	Phase Dim, 1-10V, DALI
Mounting Options	Recessed

Dimensions - Square



4" (9W, 13W)

6" (18W, 25W)

8" (25W, 38W)





PROJECT NAME _____

CATALOG NUMBER _____

NOTES _____

FIXTURE TYPE _____

SQC Series

Commercial Downlight

Dimensions - Round



4" (9W, 13W)

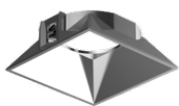


6" (18W, 25W)



8" (25W, 38W)

Reflector Options



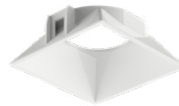
Specular



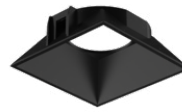
Chrome
Black



Matt



White



Black



Gold