



PROJECT NAME _____

CATALOG NUMBER _____

NOTES _____

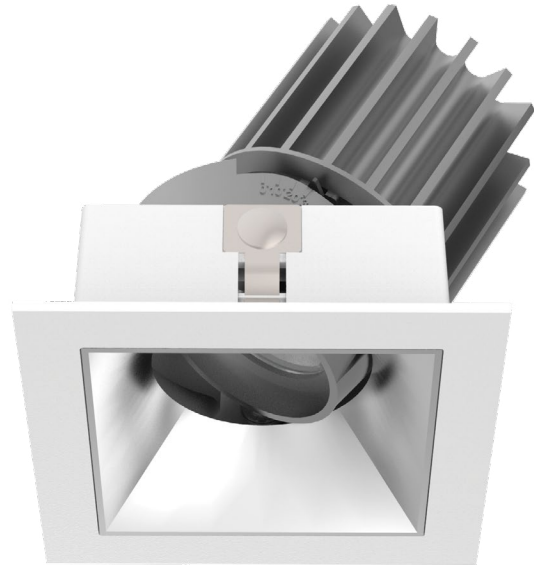
FIXTURE TYPE _____

ADL Series

Downlight

Highlights

- Elegant and Modern Design
- Versatile: Adjustable, Fixed or Wall Wash
- Round or Square Option
- 50,000 Hours
- Up to 80 Lumens per Watt
- 5 Year Warranty
- ETL Certified



Applications

- Architectural Applications
- High End
- Shopping Malls
- Lobbies
- Retail

Ordering Guide

Example

LGL-ADL-4-UV-S-A-T-G-10-27-9-PH

LGL ADL

LUMINOS GLOBAL	PRODUCT	POWER	VOLTAGE	SHAPE	TYPE	TRIM	FINISH	ANGLE	CCT	CRI	DIMMING	LIGHT DIFFUSER
LGL	ADL	4= (4W)	UV= (100-277V)	R= (Round)	A= (Adjustable)	T= (W/Trim)	S= (Silver)	10=10°	27= (2700K)	8=83+	PH= (Phase Dim)	R= (Red)
		7.5= (7.5W)		S= (Square)	F= (Fixed)	TL= (Trimless)	B= (Black)	20=20°	30= (3000K)	9=90+	1= (1-1-10V)	B= (Blue)
		11= (11W)			W= (Wall Wash)		W= (White)	40=40°	40= (4000K)		DI= (Dali)	Y= (Yellow)
		13= (13W)					G= (Gold)	50=50°	50= (5000K)			G= (Green)
		18= (18W)					CB= (Chrome Blk)					
		25= (25W)					M= (Matte)					
		38= (38W)										



PROJECT NAME _____

CATALOG NUMBER _____

NOTES _____

FIXTURE TYPE _____

ADL Series

Downlight

Technical Overview

Performance Summary	Input Voltage	100-277V	
	Input Frequency	50Hz-60Hz	
	Lumen Efficacy	Up to 80 lm/w	
	Light Output (Photopic)	2"	4W- 350 lumens
		3"	7.5W- 600 lumens
	4"	11W- 800 lumens	
		13W- 850 lumens	
	5"	18W- 1,100 lumens	
		25W- 1,700 lumens	
	6"	25W- 1,800 lumens	
		38W- 2,500 lumens	
	Working Environment	Indoor	
	Beam Angle	10°, 20°, 40°, 50°	
	Kelvin Switch Options	2700K, 3000K, 4000K, 5000K	
	CRI	83+, 90+	
	Power Factor	>0.9	
	IP Rating	IP44	
Life Span	50,000 hrs		
Dimming Options	Phase Dimming, 1-10V, DALI		
Mounting Options	Recessed		

Dimensions



Model No	Height	Trim Diameter
LGL-ADL-2-R	2.36"	2.17"
LGL-ADL-3-R	3.86"	3.07"
LGL-ADL-4-R	4.96"	4.33"
LGL-ADL-5-R	6.18"	5.39"
LGL-ADL-6-R	7.40"	6.38"



Model No	Height	Trim Diameter
LGL-ADL-2-S	2.36"	2.17"
LGL-ADL-3-S	3.86"	3.07"
LGL-ADL-4-S	4.96"	4.21"
LGL-ADL-5-S	6.18"	5.28"
LGL-ADL-6-S	7.40"	6.26"





PROJECT NAME _____

CATALOG NUMBER _____

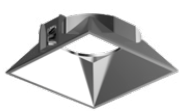
NOTES _____

FIXTURE TYPE _____

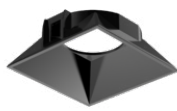
ADL Series

Downlight

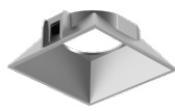
Reflector Finish Options



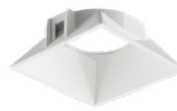
Specular



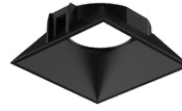
Chrome
Black



Matt



White

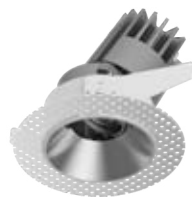


Black



Gold

Trimless Option



Configuration Options



Double



Triple



Quadriple